



Established 1993

Triumph Times

The national newsletter of the Triumph Owners Motor Cycle Club New Zealand Inc.
Published Quarterly DECEMBER 2023 www.tomcc.co.nz



TOMCC is a member club of WATOC

Northland chapter
of the Triumph Owners
Motor Cycle Club NZ Inc



30th TOMCC NZ
National Rally
8-10 March 2024

at Distinction Whangarei Hotel
9 Riverside Drive, Whangarei

Enquiries: northlandtomcc2024@gmail.com
Or phone Glenn Maconaghie, 021 279 2807

\$30
Entry

See registration form
for accommodation
details



Right of
admission
reserved

The final registration date for pre-booked rally entries has been extended to 16 January 2024. Only pre-booked entries will be eligible for a rally patch.

Ride Every Day!



For some years I had a little notion that it would be good to test whether it was feasible, even living in the south of New Zealand, to ride a motorcycle every single day of the calendar year. This came about through my use of various bike

forums, and the realisation that, in many parts of the world it is almost impossible to ride a motorcycle throughout the winter months, and in fact, Bikers in the Northern Hemisphere tend to 'lay up' or 'winterise' their machines for 3-5 months of the year. Moreover, in conversations with Bikers across the planet I was occasionally asked how I managed to deal with the weather, living so near to Antarctica in Dunedin.

So, having a somewhat systematic (maybe even pedantic) brain, I decided that sometime I might see if I could accomplish the feat of riding every single day throughout the year. Being an Ancient Historian by trade, I decided this also had to be properly chronicled, so I constructed a table of columns including the date, the bike ridden, the destination, and any comments (i.e., footnotes) on noteworthy mishaps, companions, or circumstances connected with each run.

A few years went by and I kept forgetting to start the records on New Year's Day, but on January 1st 2022 I DID remember, and so began this tradition. Summer was easy, and autumn OK, but July is the killer month down south. However, I was

helped by the fact that I taught a 9am Ancient Greek class at the University of Otago where I worked, so had to be out in it early four days a week anyway. This stiffened the spine a bit (if shrinking other parts that might be expected to be stiffer), and eventually it was spring, midsummer, and 365 days had drifted by! So, point proven: one CAN ride all year round down near Antarctica! Whether one would want to is another matter, and some days a swift one off the wrists (as the Pogues would say) 7km down to Port Chalmers was enough. But among these there were many 2-300km runs, and a few 500+km runs. Also noteworthy is that I had the COVID three times that year, but after some of the crap one puts up with during 57 years in the workforce, the Tooth Fairy's Chinese-made bogeyman didn't seem to bother me very much, and I got many sublime illicit quarantine rides in—suck on that, Madam Dictator!

A few interesting spinoffs might also be noted. Firstly, seeing that a few years ago I developed the mantra that, at a certain stage of life, a Biker Should Never Sell a Bike, but only acquire another one, I have been able to statistically record which bikes I ride often (the Triumphs, of course!), and which ones languish in the back of the shed, and sometimes are only given a run from guilt or pity... This makes thought-provoking reading, and fuels numerous domestic 'conversations' regarding the role of certain machines lying around in the hallway, shed, and sitting room.

The second matter that has arisen from the 'Ride Every Day' initiative regards the impact on the Rider. Jumping randomly and frequently between a few eclectic machines seems to have a positive effect on one's riding skills and stamina. For a start, I think I'm more 'match-fit', and secondly, jumping from a nimble Bonnie to a tall Scrambler to a large touring TBird, a quirky MZ 1000, a quick Sprint, a loping Duke or a RH shift ancient '71 Tiger forces one to re-focus every day and click brain to appropriate mode. Getting the best out of a quick-steering Thruxton or a longish wriggling Guzzi requires diverse skills. Not saying it has made me a better or worse rider—I'm about as bad or good (and lucky) as I'm probably gonna get—but I'm certainly more aware of the nuances, and I think more focused and flexible, which can't hurt.

So the experiment is over, right? Wrong! As it happens, by the 1st January this year I thought I'd continue, and go for 400 consecutive days' riding, then having such a good time and some new faces in the Shed, wondered if 500 days was possible. With a second winter looming it seemed unlikely that this thing could go on, and seeing I had finished working, the imperative of teaching the Youth of the Parish how to read Ancient Greek was no longer there (what the hell was I thinking...useless skill!). But 600 consecutive days beckoned, and as I write this I will complete 690 days, though looking out the window it is chucking it down in Antarctica, and I don't fancy it much. I'm also wondering which unfortunate bike to take . . . hmm . . . which is dirtiest? Be the Scrambler today I guess. She has 'rain mode', but you still get wet...

Dr Pat Wheatley, TOMCC NZ Otago Southland

TOMCC NZ Club Regalia Sales



Cloth Patch – \$10



Bucket Hat – S/M, L/XL – \$20



Cap – Black – \$20

Mens Black Medium Singlet	4 available	\$10.00ea
Mens Black Medium Short Sleeve Tee	1 available	\$20.00
Mens Black 5XL Long Sleeve Tee	2 available	\$15.00ea
Ladies Black size 14 Polo Shirt	2 available	\$20.00ea
Ladies Black size 16 Polo Shirt	1 available	\$20.00
Ladies Black size 18 Polo Shirt	1 available	\$20.00

For any regalia requirements, please contact me on 0275 209 091 or email tomccnzregalia@gmail.com

Wayne Hughes, TOMCC NZ, Regalia Officer

Results of National Poker Run 2023 organised by Auckland Chapter of TOMCC NZ

Best hand x3 6s #342 Irish Jon winning the \$500
2nd best hand x3 3s #50 Gray winning \$250
Spot \$50 prizes went to
#710 Caski, #714 Geary, #289 Neal
#282 Harnett, #553 Flood

We had 51 entries from all over NZ, thank you to those who supported this years event. I hope everyone had a good day and congratulations to the winners.

Glenn Mills, TOMCC NZ, Auckland

Canterbury's 30th anniversary celebration of TOMCC NZ Inc



Lindsay Jones and Wayne Watson cutting the cake.



And they're off for a good ride.

Canterbury's 30th anniversary celebration of TOMCC NZ Inc, was held on Saturday 15th July in the Sydenham community hall. Approx 30 members and partners attended a great meal catered from club funds and organised by John Milligan. Chris and Nicola Reid organised the celebration custom cake

which was cut by the two longest serving club members attending - Lindsay Jones and Wayne Watson. No club ride was organised due to the possible inclement weather and the fact that many members had attended a bike show on the previous day.(Matariki Friday). It was great that many from out of town made the journey to attend, namely Bill Reedy from Westport, Wayne and Sharon Hughes from Dunedin, Pete, Vanessa and Paul Knight from Blenheim. It was a very enjoyable affair, where all attendees enjoyed some great food and socialised together.

Wayne Woodward, TOMCC NZ, Canterbury



Wayne Woodward leading the ride.



Under starter's orders for the Anniversary ride

The Puketapu Pub



Stonehenge New Zealand



Some time in mid-August this year, two TOMCC Wanganui members - Tim and Fiona - decided that the 4 Points Rally was a good way of seeing rather a lot of the fabulously scenic North Island in a fairly short period of time. This rally is actually a poker run and is organised by the Manawatu chapter of the Ulysses Club every two years. It requires the participants to visit the 4 extreme points (approximately) of the North Island - Lake Ferry, Te Araroa, Houhora and Rahotu - to collect their playing cards. A bonus card can be collected in Coromandel and the final card is drawn at the prizegiving in Bunnythorpe. Riders have almost the whole month of October to complete the rally and the points can be visited in any sequence, but in order to be eligible for prizes, riders must attend the prizegiving in Bunnythorpe at the end of October. The following is a description of the experience in Tim's words ...

So that we could keep annual leave days to a minimum and so as not to consume every weekend in October, Fiona and I decided to ride to Lake Ferry from Wanganui and back (600km) in the first weekend of October and then, perhaps rather masochistically, to complete the other 4 points plus the bonus point (2750 km) in 5 days, timed to include Labour Weekend.

As it happened, the trip to Lake Ferry coincided with a TOMCC Wanganui overnighter to that same place. About 20 members stayed at the Lake Ferry Hotel and enjoyed eating good food, watching average pool playing and checking out the fabulous views at Cape Palliser and Ngawi. And Fiona and I collected our first 4 Points Rally playing card. On the return journey some of us stopped at Stonehenge Aotearoa, a great place to visit if you have an interest in the night sky.

About two weeks later, Fiona and I headed for the East Coast. We traveled via the Gentle Annie which is surely one of the great motorcycle rides in New Zealand thanks to great views, sparse traffic and having every type of corner and hill imaginable. Having left Wanganui at about 8.30am, we were just in time for lunch at the wonderful Puketapu pub near Napier and then we carried on up the coast as far as Tokomaru Bay, arriving at about 7pm after a small detour out on to Mahia Peninsula.

2750 kilometers in 5 days is an average of 550km per day. And many of those kilometers were not at all straight. Each day we'd raise our sidestands at about 8.30am and, after a stop for lunch and a few stops for photos (you really do have to) we would generally arrive at our destination for the day at between 5.30 and 7pm. This included between 7 and 8 hours of actual riding at an average of about 75km/h. We generally weren't speeding. Well ... not by more than a few km/h. Though passing was usually achieved as quickly as practicable. So they were big days. On reflection, if the weather hadn't been so kind to us - we experienced no rain and only a couple of hours of wet roads one morning - the ride could've been a lot more difficult. We were a bit lucky really.

On day 2 we rode up to Te Araroa Four Square to collect our next card. It's worth noting that the roads between Tokomaru Bay and Te Araroa are littered with roadworks! Prepare for a slow trip. After leaving East Cape we followed the coast as closely as possible all the way through the Bay of Plenty to Whitianga. The views are amazing in the Eastern BOP and the Te Kaha General Store does a great fish burger!



Tim in front of the Waipapakauri Hotel



Fiona above Opononi



Central Hotel, Dargaville

From Whitianga on day 3 we traveled more fantastic winding roads over to Coromandel, down to Thames, then up through Kaiaua (famous for its fish and chip shop) and Clevedon, before coming out on the Auckland motorway at Manurewa. It's a much more scenic and interesting way to get that far north. However, after that the roads were pretty tedious for about 90km. Just south of Wellsford we turned east and followed some beautiful roads through Mangawhai and Lang's Beach (which is spectacular) and Waipu. Then it was back to the main road and up through Whangarei and Kerikeri to the historic Waipapakauri Hotel for the night.

Day 4 involved a 30km trip up to Houhora to collect our next card before heading down Northland's west coast via the Rawene Ferry, Opononi, the Waipoua Forest and Dargaville, where we stopped for lunch. There are some great roads and scenery along the way, and it was far better than just going back down to Auckland the way we went up! After lunch we traveled down SH16 into West Auckland and then on to Manukau via the South-Eastern Motorway. This finally brought us back on to the Southern Motorway, but only as far as Mercer where we turned off and followed some nice backroads down to a fabulous farmstay in Glen Murray - four bedrooms when we only needed two, two bathrooms when one would have been fine and a HUGE double garage for our two motorbikes ... so spoiled!

On Day 5 we carried on down various awesome backroads (if you like that kind of thing) almost to Raglan, then via Pirongia and Waitomo down to Piopio. Lunch was had at the Awakino Hotel and then we traveled through New Plymouth (there's no easy way to

bypass it) and round Mount Taranaki (shrouded in cloud as usual) to collect our next card at Rahotu Four Square before heading home to Wanganui for a celebratory G&T at the Cobb Bar. Job done ... almost.

Fiona rode to the prizegiving in Bunnythorpe on November 28 and met the other 70 or so intrepid riders who had completed the rally. A great catch-up was had, but Fiona came away without a prize. Fortunately, as with all poker runs, it's more about the run and less about the poker. Unfortunately I couldn't make it due to prior racing commitments at Mansfield. Top tip: It pays to make sure you can attend the prizegiving before signing up for the rally.

Circumnavigating the North Island is something that I believe every biker should do at some point. This wasn't quite a circumnavigation but it covered a lot of the same ground. Definitely worth doing again ... maybe without quite so many kilometers squeezed into each day next time.

Tim Fraser, TOMCC NZ, Wanganui



East Coast viaduct



Lang's Beach



Historic Rawene



**TOMCC NZ
East Coast
Triumph Bike Show**

We wish to thank Steve and the East Coast members who assisted with the show. Also thanks to the chapters who sent event banners in support of the Show. Reading comments from different social media sites of other motorcycle clubs, and our national TOMCC NZ Facebook page, a very very good response to the show.



TOMCC NZ East Coast Triumph Bike Show, November 2023



Northland Area Pink Ribbon Ride



Kelvin Harnett (Iceman) and Anne Thorp, a celebrity chef, modelling the shirt Kelvin won at the auction.



Carolyn Flood and Rennie Dixon, staunch supporters of the Pink Ribbon Ride.



Glenn Maconaghie, Northland Area Co-ordinator with the latest in biker hairstyles.



Voting in of club officers for 2024

The procedure for you to vote for club officers is:

1. Choose who you wish to vote for from the nominee column in the list. That is one vote for each position having one or more nominees.
2. Send your votes to your Area Coordinator by one of three ways:
By email (the preferred option) or by post in a letter or at a meeting, called for this purpose.

For the purpose of emailed and postal votes the final date for receiving votes will be the date of an area meeting called for the purpose of voting.

Your Area Co-ordinator will then combine all the votes from within their area. These will be recorded on an Accumulated voting paper which your Area Co-ordinator will have in due course. This will then be submitted to the returning officer, in this case our TOMCC NZ President.

Notification of a meeting for the purpose of voting, must be sent by the Area Coordinator to all members. Please note that you do not have to attend a meeting to cast a vote, this can be done by email or post.

It is preferred that voting be carried out by email or post as this allows members to make Voting for club officers for 2023 their own private choice without pressure or undue influence from other members.

If for any reason you do not know who your Area Co-ordinator is, please send your vote to the returning officer:

If for any reason you do not know who your Area Co-ordinator is, please send your vote to the returning officer.

Email: john.witherington@extra.co.nz

Post: 212 McQuarrie Street, Invercargill 9812

The nominees for club officers for 2024

<i>President</i>	John Witherington
<i>Vice President</i>	two candidates: Pat Wheatley or Glenn Maconaghie
<i>Treasurer</i>	No Nominations
<i>Regalia</i>	Wayne Hughes
<i>Membership Sec</i>	Rik Reid
<i>Newsletter Editor</i>	Ken Spall
<i>Website</i>	No Nominations

Area / Chapter coordinators

<i>Northland</i>	Glenn Maconaghie
<i>Auckland</i>	Glenn Mills
<i>Franklin</i>	No Nominations
<i>East Coast</i>	Steve Kendall
<i>Waikato & Bay of Plenty</i>	No Nominations
<i>Taranaki</i>	Michelle Casey
<i>Manawatu</i>	No Nominations
<i>Wanganui</i>	No Nominations
<i>Canterbury</i>	Murray Davison
<i>Otago & Southland</i>	John Witherington

Profit and loss report

Accrual mode
 01 Nov 2022 - 31 Oct 2023

	Total	Last Year
	Actual	
Income		
4-1300 Membership Renewals	\$13,055.00	\$10,985.00
4-1301 Membership small balance write off	(\$25.00)	\$0.00
4-1350 Membership Donations	\$95.00	\$15.00
4-1440 Interest Income - National	\$299.11	\$20.18
4-1441 Resident Withholding Tax - National	(\$89.73)	(\$5.06)
4-1450 Regalia Sales - National	\$2,283.30	\$1,298.20
4-1451 Regalia - Donations	\$0.30	\$0.00
4-1475 Income Tax Refund	\$2.95	\$0.00
4-1481 Area - Auckland		
4-14813 National Poker Run	\$0.00	\$1,080.00
4-14814 Rally Registration Fees	\$0.00	\$3,853.00
4-14816 Donations	\$0.00	\$40.00
4-14817 Rally Food & Beverage	\$0.00	\$6,824.00
Total Area - Auckland	\$0.00	\$11,797.00
4-1482 Area - Canterbury		
4-14821 Interest Income - Canterbury	\$521.65	\$158.47
4-14822 Resident Withholding Tax - Canterbury	(\$234.74)	(\$71.30)
4-14824 Rally Income - Canterbury	\$8,553.00	\$4,252.00
Total Area - Canterbury	\$8,839.91	\$4,339.17
4-1484 Area - Manawatu		
4-14841 Interest Income - Manawatu	\$2.46	\$0.14
4-14842 Resident Withholding Tax - Manawatu	(\$1.11)	(\$0.06)
Total Area - Manawatu	\$1.35	\$0.08
4-1485 Area - Northland		
4-14851 Interest Income - Northland	\$0.00	\$0.36
4-14852 Resident Withholding Tax - Northland	\$0.00	(\$0.12)
Total Area - Northland	\$0.00	\$0.24
4-1486 Area - Otago / Southland		
4-14861 Interest Income - Otago/Sthland	\$97.47	\$13.88
4-14862 Resident Withholding Tax - Otago/Sthland	(\$43.86)	(\$6.25)
Total Area - Otago / Southland	\$53.61	\$7.63
4-1487 Area - Taranaki		
4-14871 Interest Income - Taranaki	\$0.00	\$3.25
4-14872 Resident Withholding Tax - Taranaki	\$0.00	(\$1.46)
Total Area - Taranaki	\$0.00	\$1.79
4-1488 Area - Waikato / BOP		
4-14881 Interest Income - Waikato/BOP	\$0.00	\$10.50

	Total	Last Year
	Actual	
4-14882 Resident Withholding Tax - Waikato/BOP	\$0.00	(\$4.72)
4-14884 Members Social Events	\$0.00	\$30.00
Total Area - Waikato / BOP	\$0.00	\$35.78
4-1489 Area - Wanganui		
4-14890 Bar Proceeds	\$2,240.00	\$0.00
4-14891 Boxing Day Lock Up	\$5,150.00	\$5,168.20
4-14894 Regalia Sales - Wanganui	\$0.00	\$730.00
Total Area - Wanganui	\$7,390.00	\$5,898.20
Total Income	\$31,905.80	\$34,392.21
Cost Of Sales	\$0.00	\$0.00
Gross Profit	\$31,905.80	\$34,392.21
Expenses		
6-1130 Bank Fees	\$0.00	\$5.00
6-1160 Computer & IT Expenses	\$0.00	\$480.70
6-1200 Freight, Courier & Postage	\$59.80	\$13.75
6-1210 NZ Post Box Rental	\$180.00	\$170.00
6-1230 Printing & Stationery	\$188.49	\$173.10
6-1330 Subscriptions & Memberships	\$1,204.69	\$486.71
6-1500 Depreciation - National	\$0.00	\$1,615.37
6-2000 Membership Expenses		
6-2001 Membership Badges	\$0.00	\$668.56
6-2002 Membership Postage	\$926.09	\$812.40
6-2003 Membership Printing & Stationery	\$1,142.99	\$582.39
Total Membership Expenses	\$2,069.08	\$2,063.35
6-2100 Newsletter Expenses		
6-2101 Newsletter Printing & Stationery	\$2,597.45	\$3,906.91
6-2102 Newsletter Postage	\$2,066.70	\$2,298.00
Total Newsletter Expenses	\$4,664.15	\$6,204.91
6-2200 Rally Expenses		
6-2201 Rally Advance to Area	\$0.00	(\$1,000.00)
Total Rally Expenses	\$0.00	(\$1,000.00)
6-2300 Regalia Expenses		
6-2301 Regalia Cost of Goods Sold	\$3,018.43	\$1,029.32
6-2302 Regalia Postage	\$126.00	\$137.89
6-2303 Print & Stationery	\$4.49	\$0.00
Total Regalia Expenses	\$3,148.92	\$1,167.21
6-2400 Treasurer Expenses		
6-2402 Treasurer Printing & Stationery	\$0.00	\$72.99
Total Treasurer Expenses	\$0.00	\$72.99
6-3000 Area - Auckland		
6-3002 Poker Run Prizes	\$0.00	\$1,100.00
6-3003 Rally Site Costs	\$0.00	\$720.00
6-3004 Rally Food Costs	\$0.00	\$5,731.00
6-3005 Rally Entertainment Costs	\$0.00	\$600.00
6-3006 Rally Alcohol Costs	\$0.00	\$3,547.00
6-3007 Rally Other Costs	\$0.00	\$733.70
6-3008 Rally Regalia Costs	\$0.00	\$3,867.27
Total Area - Auckland	\$0.00	\$16,298.97

	Total Actual	Last Year
6-3100 Area - Canterbury		
6-3102 Members Social Events	\$1,619.27	\$517.68
6-3103 Regalia Expenses	\$0.00	\$28.00
6-3104 Trailer Registration & Expenses	\$0.00	\$232.28
6-3105 Club Expenses	\$0.00	\$90.00
6-3106 Club Overnighter 2022	\$0.00	\$1,286.97
6-3107 Club Mid-Winter Event	\$0.00	\$700.00
6-3108 General	\$200.00	\$0.00
6-3109 Donation	\$100.00	\$0.00
6-3110 Subscriptions	\$30.00	\$0.00
6-3111 National Rally - Food Costs	\$6,045.96	\$0.00
6-3112 National Rally - Entertainment Costs	\$290.00	\$0.00
6-3113 National Rally - Other Costs	\$106.31	\$0.00
6-3114 National Rally - Bike Show Prizes	\$41.20	\$0.00
6-3115 National Rally - Rally Regalia	\$3,111.90	\$0.00
6-3116 National Rally - Van Hire & Fuel	\$1,051.82	\$0.00
Total Area - Canterbury	\$13,006.46	\$2,854.93
6-3200 Area - Franklin		
6-3201 Bank Fees - Franklin	\$0.00	\$7.50
Total Area - Franklin	\$0.00	\$7.50
6-3400 Area - Northland		
6-3406 Regalia	\$0.00	\$276.00
Total Area - Northland	\$0.00	\$276.00
6-3500 Area - Otago / Southland		
6-3501 General	\$0.00	\$29.99
6-3503 Printing & Stationery	\$0.00	\$96.60
Total Area - Otago / Southland	\$0.00	\$126.59
6-3800 Area - Wanganui		
6-3801 Bank Fees - Wanganui	\$20.40	\$8.40
6-3802 Bar Licence	\$63.25	\$63.25
6-3803 Clubroom Maintenance	\$76.62	\$45.50
6-3804 Couriers & Freight	\$0.00	\$10.00
6-3805 General	\$0.00	\$52.20
6-3806 Members Disbursements	\$1,288.87	\$0.00
6-3807 Members Social Events	\$4,327.84	\$1,578.25
6-3808 Regalia Costs	\$0.00	\$1,000.00
6-3809 Rent or Lease	\$4,000.00	\$4,000.00
6-3810 Rubbish Collection Costs	\$0.00	\$398.07
6-3811 Trophies & Engraving	\$0.00	\$23.00
Total Area - Wanganui	\$9,776.98	\$7,178.67
Total Expenses	\$34,298.57	\$38,195.75
Operating Profit	(\$2,392.77)	(\$3,803.54)
Other Income	\$0.00	\$0.00
Other Expenses	\$0.00	\$0.00
Net Profit	(\$2,392.77)	(\$3,803.54)

Waikato and Bay of Plenty take part in the national TOMCC NZ Poker Run

Shane Borrell and Kerry Hickey departed the BP at 9:30am and head out through Gordonton and across the plains to Paeora, hung a right and through the gorge to Waihi. Chris Batten was waiting. Our first card arrived on the way over, nothing to get excited about yet. Left Waihi at 11am with Chris leading and headed down to Bethlehem, road works and a lot of 80 kph along with traffic made it a bit slow but pulled into the Gull servo a bit before 12 midday. Marie, Murray and Jason rolled in just behind us.

Left the Gull servo at 12 heading for Ngongotaha via Pyes Pa, Mangorewa Kahoroa Gorge (some good twisties in there) followed by another smaller gorge, and then onto Haumurana. Easy right turn and into Ngongotaha for lunch. More cards had arrived and Jason won a spot draw of \$50.

Following lunch, we headed to Cambridge over the Mamaku Range, with a bit of traffic but got along quiet well with Murray in front. Found the Good George and parked up.

Shane parked his very nice RS1250 away from the 5 Triumphs, hence it is missing from the photo. We enjoyed a couple of cold ones and our last cards came through, no winning hands but a good day out.

The ride for me and probably Chris was a bit over 300 kms, for Marie, Murray and Jason a bit less and Shane about 500 or so.

*Kerry Hickey,
TOMCC NZ, Northland*

Notes from a Hinckley Triumph factory visit, September 2023



On a recent visit to the UK for family reasons I was also lucky to be able to pay a visit to the birthplace of the modern rendering of our beloved bikes - Hinckley in Leicestershire. I hope that the photos and accompanying notes will be of interest.

But first, a bit of history. As you come into Hinckley there is a sign proclaiming Hinckley as the home of Triumph. But prior to John Bloor's interest in the area, there had been a sign proclaiming

Hinckley as the home of the Hansom Cab. This popular mode of Victorian transport was invented in 1834 by Joseph Hansom and developed and tested in Hinckley.

As an aside, this gem of information had been given to me by my good friend and fellow (overseas) member Roy Maddox, who is a resident of Hinckley. He had also organised our Triumph factory visit.

And so, back to the Hansom Cab. It is my suggestion that a parallel can be made



between this mode of transport and our own Triumph motorcycles.

- Both modes of transport have two wheels.
- The purpose of its design was to combine speed with safety (well, as bikers we think so anyway).
- A low centre of gravity, essential for safe cornering and overtaking.
- There is forward and aft seating for rider and passenger.
- The vehicles are light and eminently manoeuvrable.
- The rider is exposed to the elements, the passenger less so.
- And finally both modes of transport are driven by horsepower.

So, all in all, a rather nice historic coincidence coming together in Hinckley, now the home of Triumph and the Hansom Cab.

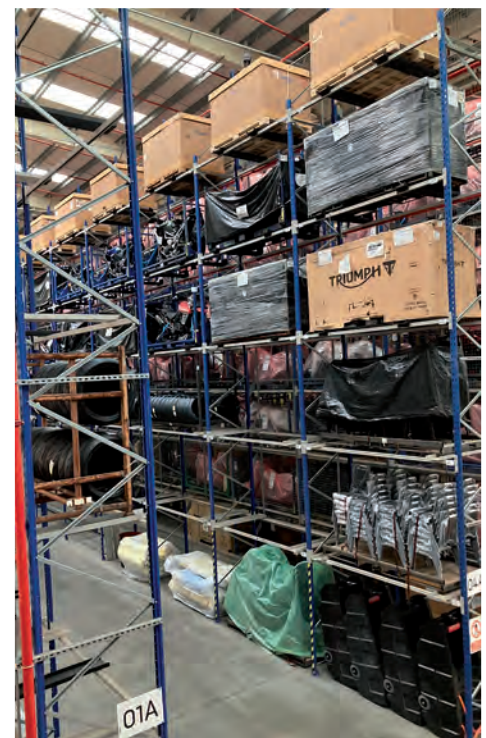
PS. I wonder how Roy feels about my conclusion.



Pictured above is the bike that Rhys Lawrey used in his world charity raising tour of 2014. It is of significance to our club as, when he was riding here, members from each of our club areas accompanied him on his ride through NZ. For those of you who keep your copies, you can read about his ride in the September 2014 issue of Triumph Times. So after almost 10 years, it was a rather nice surprise to come across the bike during my visit to the Triumph factory. At first glance



I had recognised the bike, but not sure from where. Then I spotted our club logo on the back of one of the pannier boxes. And there we have a TOMCC NZ link (albeit small) with the Triumph factory.





For more than a hundred years, Triumph's passion and innovation has shaped the evolution of the motorcycle. With an unparalleled history of building legends, Triumph is one of the world's most iconic brands, built by riders for riders.

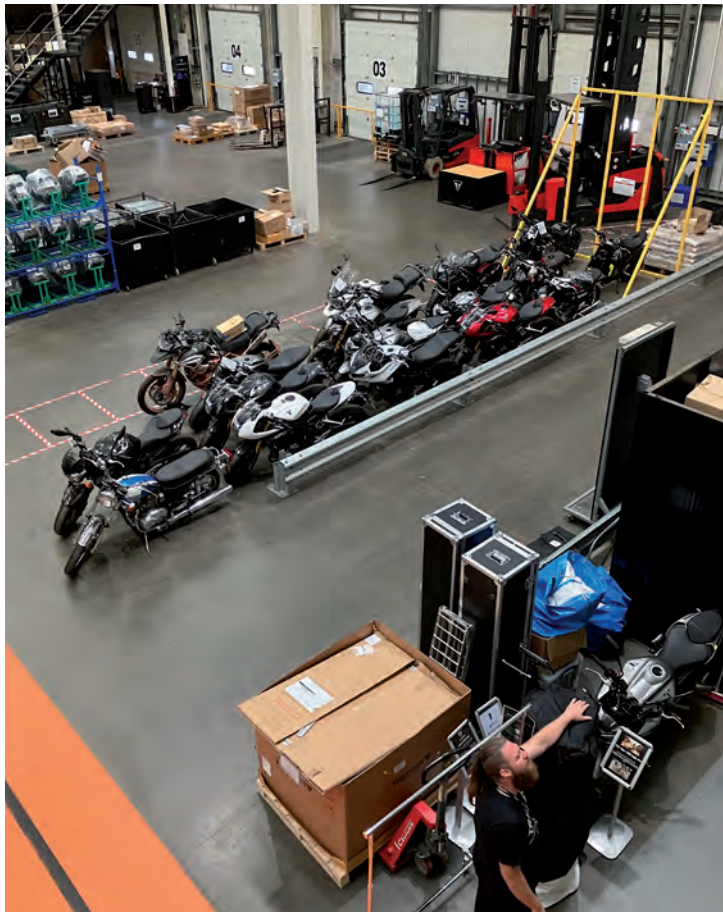
A visit to the Triumph factory is most certainly very worthwhile. There is no cost for entry to the Triumph Experience Visitor Centre, which houses possibly the world's best display of Triumph bikes as well as many displays relating to Triumph history and development, both historic and modern. These are constantly being up-dated.

The factory tour itself has an entry fee of £28 for a 90 minute tour. As it was a Sunday when I attended the tour went on for a bit more than two hours. Also on Sunday the production line is not in operation, but there were bikes in various stages of assembly. Actually machining process all appeared to take place behind large safety screens and sealed-off areas, so we wouldn't have seen much anyway.

Invariably the question was raised as to which bikes are still being manufactured in the Hinckley factory. At the time of my visit it was only the 1200 and 900 Tigers, Speed Triples and Rocket 3 that were being made in either of the two factories in Hinckley. The other Triumph models are manufactured in either, Chonburi, Thailand and Manaus, Brazil. With new 400cc bikes being built in Maharashtra, India.

Photography inside the factory area itself is strictly prohibited on threat of immediate removal from the Triumph site, but I was permitted to photograph part of a storage and dispatch area.

Ken Spall, TOMCC NZ, Otago Southland



Canterbury Chapter – Whitebait Run, Westport November 2023



Keen Whitebait riders outside the Quarry Bar & Grill Westport, ready for a ride to Karamea.



Dining at the Quarry Bar and Grill

Since 2007 the Whitebait Run to Westport has been the Canterbury Area signature ride of the year. Many of you who attended this year's National Rally will remember the McManus Hotel which has been our venue from the beginning. Little did we know then that this would be the last time we were to stay there. Just five weeks prior to going we were advised that McManus Hotel was to be sold to Mitre 10 and would be closed by the time of our visit.

Undeterred, Woody and I decided to find an alternative venue, with the general consensus that Westport remains the destination. The Quarry Bar and Grill was chosen as our socialising venue with members organising their own accommodation either at the Quarry or at a nearby establishment. Unfortunately, we couldn't guarantee a whitebait breakfast for this trip, although it later transpired that one of our Westport members had procured the whitebait (but that's another story).

On leaving Christchurch on Friday 17 November it was a little disappointing to have only five members turn up at our meeting place, the Yaldhurst Hotel carpark. Maybe it was the weather, the fact that people had to organize their own accommodation or Mr Age. Who knows.

As is often the way after days of sunny weather, Hugo decided it would be good to turn on the tap for our ride over Arthur's Pass. This nevertheless gave Woody and Scottie a chance to display the art of riding in the rain with everyone arriving safely at the Brunner Hotel in Moana for lunch. We were soon joined by Pat and Liz who had travelled up from Dunedin on their Thunderbird. Our Area Co-ordinator, Murray Davison, who was in Moana for a family holiday paid us a visit for lunch.

Next stop was the Punakaiki Pub where we found Kenny and Billy who had come down from Westport to meet up with us. Still a few showers, and no Scottie. A phone call revealed he was having overheating issues on the Ducati, which turned out to be a loose connection block preventing the radiator fans from working. An easy fix. Due mainly to the weather, this became our last stop with everyone heading straight through to Westport and dry clothes.

After checking in to our accommodation we all gathered at the Quarry Bar and Grill and were soon met by Malcolm and Chrissie from Takaka, and Tony also from the Nelson region. Yeah, there were now twelve of us.

Don't know why but the first night always seems to be the big night. Well

for some anyway, hey Terry.

Saturday dawned fine and sunny with the planned ride to Little Wanganui for lunch all go. Nicola and I decided to be tourists for the day and have a look around the many small towns north of Westport with the highlight being a trip up to the Denniston Plateau Historic Coalmining Area. My last trip up there would of been with TOMCC NZ members approximately 14 years ago. Back then we were the only ones up there but now we encountered trampers, cyclists, cars, scooters and there even appeared to be a couple of permanent residents. No coffee cart though. A lot of work has been carried out to preserve the site and is well worth a visit if you are in the area.

Table for twelve people booked that night at the Quarry Bar and Grill, certainly raised the volume a tad but no one seemed to care. Most importantly the girls working at the Quarry were most welcoming and we have already had discussions with them to use this establishment in future and yes, all going well, with a whitebait breakfast.

A big thanks to everyone who made an effort to go, and in particular Malcolm and Chrissie, Tony, Pat and Liz whose company made for a fantastic weekend for the rest of us.

Looking forward to next year.

*Chris Reid,
TOMCC NZ Canterbury Area*



Pat - On Jennie, one more wish please, more gravy.



Malcolm and Chrissie on Scrambler



Local member Ken Forsyth



Photo with thanks to the Motorcycle Safety Institute of South Africa.

Canterbury Area of TOMCC NZ are calling for contestants wishing to enter for the prize of

Youngest member riding to the National Rally

Members wishing to enter must be present at the time of prize giving and have ridden and registered for the rally.

The prize is membership paid for the following year and a special certificate.

Bring out the Hot One's Rally Prize

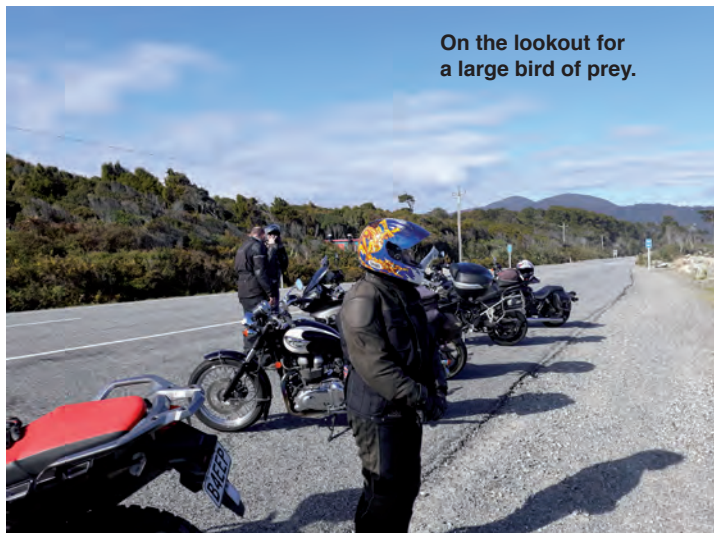


Ride your Triumph to the rally. Be it old or new, ride it like you own it to the TOMCC NZ National Rally 2024.

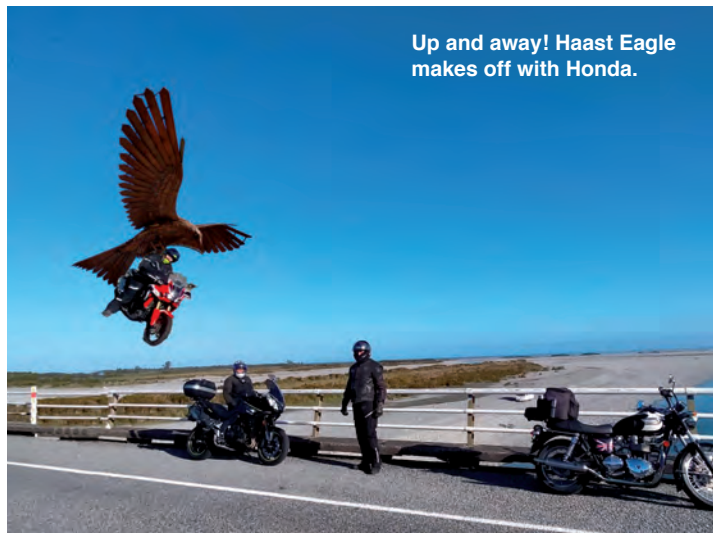
Otago & Southland Chapter of TOMCC NZ are contributing prizes for members riding to the National Rally.

Be in to win, don't be standing in the crowd wishing you had.

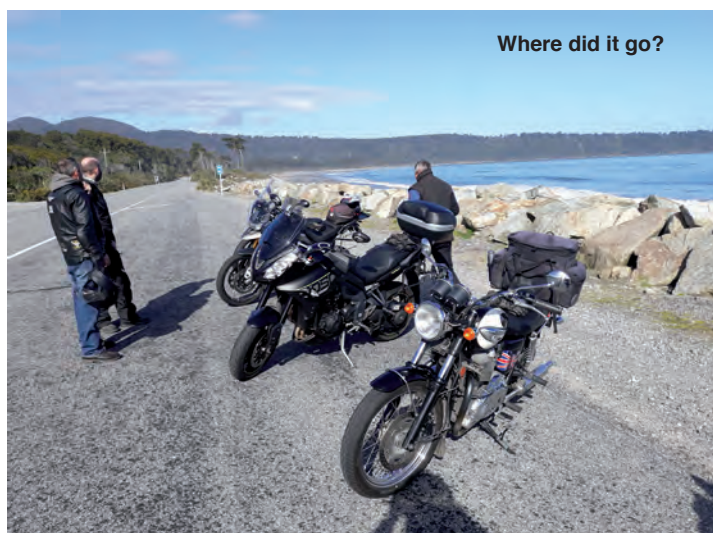
Otago & Southland Chapter – Haast Eagle Ride, October 2023



On the lookout for a large bird of prey.



Up and away! Haast Eagle makes off with Honda.



Where did it go?

Labour Weekend – 2023. As advertised, an all weather ride, Come prepared – not for the faint hearted.

Heading into the wild frontier of South Westland the least travelled and some of the best motorcycling roads New Zealand has to offer, for a light hearted search for Te Hikoikoi – the Haast Eagle.

In brilliant weather we headed off for another adventure with a range of Triumph's. Tigers, T100 Bonneville, Speedmaster and one other brand – out of Africa? Whilst riding an Africa, that being Shaun from Canterbury, unbeknown to become the sacrificial sheep to a huge predator capable of carting off man and machine!

After meeting up at the Luggate Hotel for lunch with fellow members from Canterbury, we headed off for a brisk ride to the coast.

East Coast Area of TOMCC NZ member Steve, was heading down the West Coast to meet up with us at our accommodation in the motel owned by Chris (Gumboots), an Otago & Southland member. Accommodation all sorted, except for Brent and Shaun who missed booking the second night of accommodation. Being a small township all the accommodation providers are within walking distance of each other so Brent simply jumped over a fence to the backpackers and as luck would have it they had room to spare.

We then rode off with Brent and Shaun heading down to Jackson Bay on a scouting trip, and another to lay out bait and nesting material by the Haast Bridge in the hope of attracting the birds of prey into the area.

The second day was a ride up to Fox for lunch. Riding further up to Franz Josef, Marten and; Leona, while riding into

the township, startled the local constabulary into sprinting off to their patrol car. Now the feeling you are under the watchful eye but what eyes?

Now, back at the Haast Bridge it happened, quick as a flash with the sun at its back, Te Hikoikoi struck! Shaun the sacrificial rider was a goner for sure. Scooped up in one fell swoop only to be released from the talons of the eagle, after a quick-thinking TOMCC NZ member took a photo for Ken our national newsletter editor.

The following morning we headed away up to Makarora for breakfast still a bit shocked from the previous day's encounter. Shaun misplaced the keys to the Africa. While we had breakfast, he searched the place high and low only to find them where they were placed for safe keeping – on the seat of his bike!

Travelling from Makarora to Lake Hawea we then split up to head our own way home.

With regret we noted the absence of Canterbury Area member Mathew Shove who had recently passed away. Mathew would often attend our rides on his Tiger. He and his enthusiasm will be missed by us all.

John Witherington, TOMCC NZ Otago Southland

Triumph Times Editor: Ken Spall

Phone 03 489 1740 or 021 26 99 530

Email: kent140d@gmail.com

50B Hargest Crescent, St Kilda, Dunedin 9012, New Zealand

The deadline for the next issue of
Triumph Times is 25 March 2024

**Northland Chapter of the Triumph Owners Motor Cycle Club NZ Inc
30th TOMCC NZ National Rally, 8-10 March 2024
Distinction Whangarei Hotel 9 Riverside Drive, Whangarei**

REGISTRATION FORM

ONE REGISTRATION FORM PER PERSON ONLY PLEASE

**Rally registration must be submitted by 16 JANUARY 2024 to
TOMCC NZ RALLY, 298 BEACH ROAD, ONERAHI, WHANGAREI 0110
or email: northlandtomcc2024@gmail.com**

First Name..... Last name

Address

Email Phone

TOMCC NZ Area

Membership No.

Bike Details Make Model..... Rego

Accommodation Options

To enable us to be together as a rally we have secured 51 rooms at the Distinction Whangarei Hotel for rally attendees. Budget accommodation is also available at the nearby Top10 Holiday Park. Room rates at the Distinction Whangarei Hotel are as follows:

- Superior King Room (1 King Bed)
Room only \$199 – with Breakfast \$224**
- Superior Twin Rooms (2 Queen Beds)
Room only \$199 – with Breakfast \$249**
- Junior Suites (1 King in one room
and 2 Singles in lounge area)
Room only \$269 – with Breakfast \$319**

PLEASE NOTE Rates are per night based on a maximum of 2 per room. Breakfast is full cooked

Meals

The restaurant at the Distinction Whangarei Hotel is able to provide a breakfast and an evening meal, prices as shown. Payment for meals is either at room booking or on the day if your accommodation is elsewhere.

- Friday evening – 2 course buffet dinner \$55**
- Saturday morning – cooked breakfast \$25
– continental breakfast \$15**
- Saturday evening – 2 course buffet dinner \$55**
- Sunday morning – cooked breakfast \$25
– continental breakfast \$15**

**To book with the Distinction Whangarei Hotel please do so by phone.
DO NOT BOOK ON-LINE**

Contact Sirelle Thomson, phone 09 430 4080 using Booking Code 156573

Rally T Shirts

	Colour please tick choice			Size please circle choice									
Mens T Shirt	Black	<input type="checkbox"/>	Grey	<input type="checkbox"/>	Navy	<input type="checkbox"/>	S	M	L	XL	2XL	3XL	\$30
Ladies V Neck	Black	<input type="checkbox"/>	Grey	<input type="checkbox"/>	Navy	<input type="checkbox"/>	8	10	12	14	16	18	\$30
Polo Shirt	Black	<input type="checkbox"/>	Grey	<input type="checkbox"/>	Navy	<input type="checkbox"/>	S	M	L	XL	2XL	3XL	\$35

Costs and payment

**Internet Banking:
Northland Triumph 38-9006-0363727-00
Please use Surname and Membership Number
as reference.**

Registration Fee (includes rally patch)	\$30
Rally T Shirt	
Total Cost	

DISCLAIMER – In signing this form I agree to abide by all rules of the rally and will hold blameless all organisers and/or officials connected with the rally for any injuries,

loss or damage at the rally, or travelling to or from the rally. Absolutely no BYO, no gang patches, no dogs, no glass and no attitudes. Right of admission reserved.

Name..... Signature..... Date



The Triumph Owners Motor Cycle Club New Zealand Inc.
 If undelivered, please return to 50B Hargest Crescent, St Kilda, Dunedin 9012 New Zealand



The Members and Committee of TOMCC NZ Inc welcome the following new members to our club

Rob Kendall	East Coast	Craig Montgomery	Northland
Mike Williams	Canterbury	Kevin Rooney	Northland
Andy Collie	Franklin	Sherie Pullman	Northland
Tony Treleaven	Canterbury	Geoff Heywood	Northland
Rob Barr	Otago Southland	Andrew Blyde	Waikato/Bay of Plenty
Luke Matthews	Waikato/Bay of Plenty	Gary Wilson	Taranaki
Adrian Rodger	Canterbury	Stephen Grey	Auckland
Timothy Dickinson	Otago Southland	Michael Leech	Northland
Andre Wilkening	Auckland	Mark Walker	Waikato/Bay of Plenty
Chris Donovan	Otago Southland	Callum Figgins	Auckland
Dean Parker	Canterbury	Stuart Cawley	Wanganui
Steve Caskie	Auckland	Michael Tasker	Waikato/Bay of Plenty
Gavin Davison	Canterbury	Royden Motu	Auckland
Marie Hartwell	Waikato/Bay of Plenty	Robert Mason	Northland
Murray Hartwell	Waikato/Bay of Plenty	Todd Hooper	Manawatu
Bill Hunt	Auckland	Mike Spijkerbosch	Northland
Lesley Emmett	Northland	Martin van der Kley	Canterbury
Andrew Otto	Franklin	Al Richards	Wanganui
Eric Geary	Waikato/Bay of Plenty	Brendon Wilson	Auckland
Janette Liz Webb	Northland	Desmond Tuapawa	Waikato/Bay of Plenty

TOMCC NZ Regular Area/Chapter Rides and Meetings

Northland Monthly meeting and ride, last Sunday of the month. Meeting at Frings Bar & Eatery, 10.30am.

Auckland Contact Glenn Mills, ph 021 032 9920, email wokkey@hotmail.com. Runs and meetings to be confirmed

Franklin Contact Chris Smith, email trippletrickz@gmail.com

Waikato Bay of Plenty Details vary. Contact Judith Nightingale email judibonnie@gmail.com

Taranaki Monthly Ride and Meeting. Last Sunday of the month, 10am at the Caltex service station on Eliot St, New Plymouth.

Whanganui Monthly ride. Last Sunday of the month. Clubrooms Anzac Parade at 10am. Monthly meetings, last Monday of the month also at the clubrooms at 7pm.

Manawatu Contact email tomccmanawatu@gmail.com

East Coast Monthly rides will be last weekend of the month to various venues. Check Facebook page TOMCC NZ, East Coast. Steve Kendall, steverkendall@outlook.com

Canterbury Monthly Meeting, second Tuesday of the month, held at various committee members' homes. Contact Murray Davison, email murraydacall@gmail.com, ph 021 0864 9050.

Otago Southland Monthly Ride. First Sunday of each month, 11am at the Z service station, Andersons Bay Road, Dunedin.

TOMCC NZ Inc Club Officers and Committee Members

President

John Witherington
 Ph: 027 247 2853
 Email: john.witherington@xtra.co.nz

Vice President

Ken Spall
 Ph: 021 26 99 530
 Email: spall@callsouth.net.nz

Membership Secretary

Rick Reid
 Ph: 027 258 8530
 Email: tomccnatsec@gmail.com

Treasurer

Melissa Shipp
 Ph: 021 843 564 or 06 327 7077
 Email: tomccnztreasurer@gmail.com

Regalia Officer

Wayne Hughes
 Ph: 027 520 9091
 Email: tomccnzregalia@gmail.com

Webmaster

Tim Fraser
 Ph: 021 963 280
 Email: webmaster@tomcc.co.nz

Triumph Times Editor:

Ken Spall
 Ph: 021 26 99 530
 Email: spall@kinect.net.nz

AREA CO-ORDINATORS

Northland

Glenn Maconaghie
 Ph: 021 279 2807
 Email: glennmaconaghie@gmail.com

Auckland

Glenn Mills
 Ph: 021 032 9920
 Email: wokkey@hotmail.com

Franklin

Chris Smith
 Ph: 027 637 9546
 Email: trippletrickz@gmail.com

Waikato / Bay of Plenty

Judith Nightingale
 Ph: 021 102 2599
 Email: judibonnie@gmail.com

East Coast

Steve Kendall
 Ph: phone 027 454 2224
 Email: tomccnzeastcoast@gmail.com

Manawatu

Melissa Shipp
 Ph: 021 843 564
 Email: tomccmanawatu@gmail.com

Taranaki

Michelle Casey
 Ph: 06 756 8686 or 027 448 0326
 Email: victoria@ps.gen.nz

Wanganui

Tim Fraser
 Ph: 06 929 5825 or 021 963 280
 Email: tomccwanganui@gmail.com

Canterbury

Murray Davison,
 021 0864 9050.
 Email: murraydacall@gmail.com

Otago / Southland

John Witherington
 Ph: 027 247 2853
 Email: john.witherington@xtra.co.nz

DISCLAIMER

Opinions expressed in this publication are purely individual and are not to be attributed to the Triumph Owners Motor Cycle Club NZ Inc. as a whole. Nor does the publication or naming of any entity, organisation, product or concept, either private or commercial, imply any endorsement, either by Triumph Owners Motor Cycle Club NZ Inc. or by its committee.

Photos for this issue of *Triumph Times* were kindly supplied by Tim Fraser, Marissa Woods, Chris Reid, John Witherington, Lloyd Williams and Ken Spall.